

# RISERPACK®

## Model 8511




WWW.AGFMFG.COM

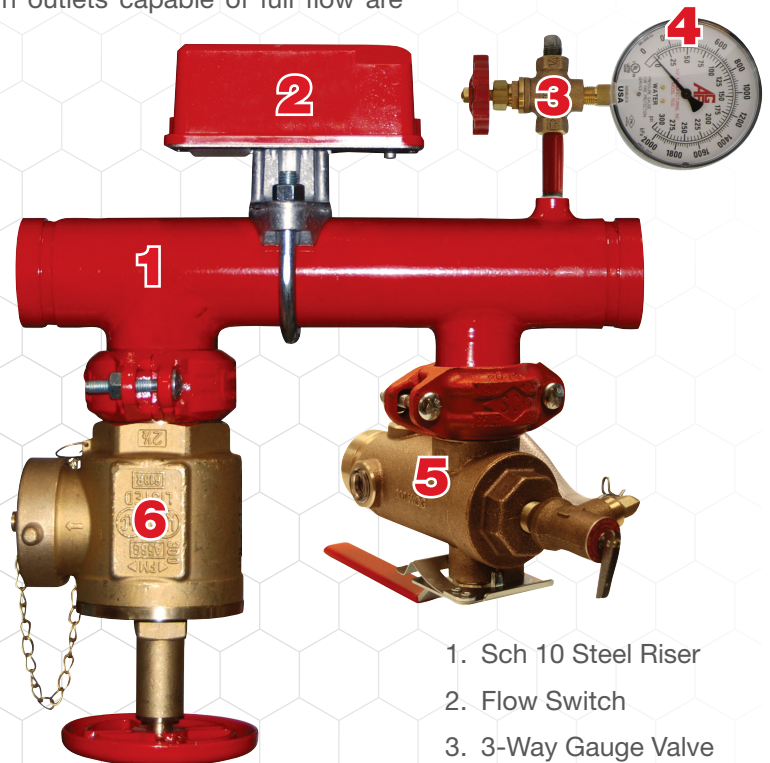
### Commercial RISERPACK with Hose Connection

The Commercial RISERPACK Model 8511 assembly is fabricated in the USA using domestically made schedule 10 pipe and includes a TESTanDRAIN Model 2511 with pressure relief valve and drain trim, flow switch, pressure gauge, 3-way gauge valve, and features a 2½" hose valve. The Model 8511 was designed for floor control applications utilizing an in-line or angled pressure reducing valve where downstream drain outlets capable of full flow are required for acceptance testing and future inspection.

Sizes:

2"	2½"	3"
----	-----	----

SIZE	Orifice Size	AGF Item ID
 2"	K2.8	8540
	K4.2	8541
	K5.6	8542
	K8.0	8543
	11.2 ELO	8544
 2½"	K2.8	8560
	K4.2	8561
	K5.6	8562
	K8.0	8563
	11.2 ELO	8564
	14.0 ESFR	8565
 3"	K2.8	8570
	K4.2	8571
	K5.6	8572
	K8.0	8573
	11.2 ELO	8574
	14.0 ESFR	8575



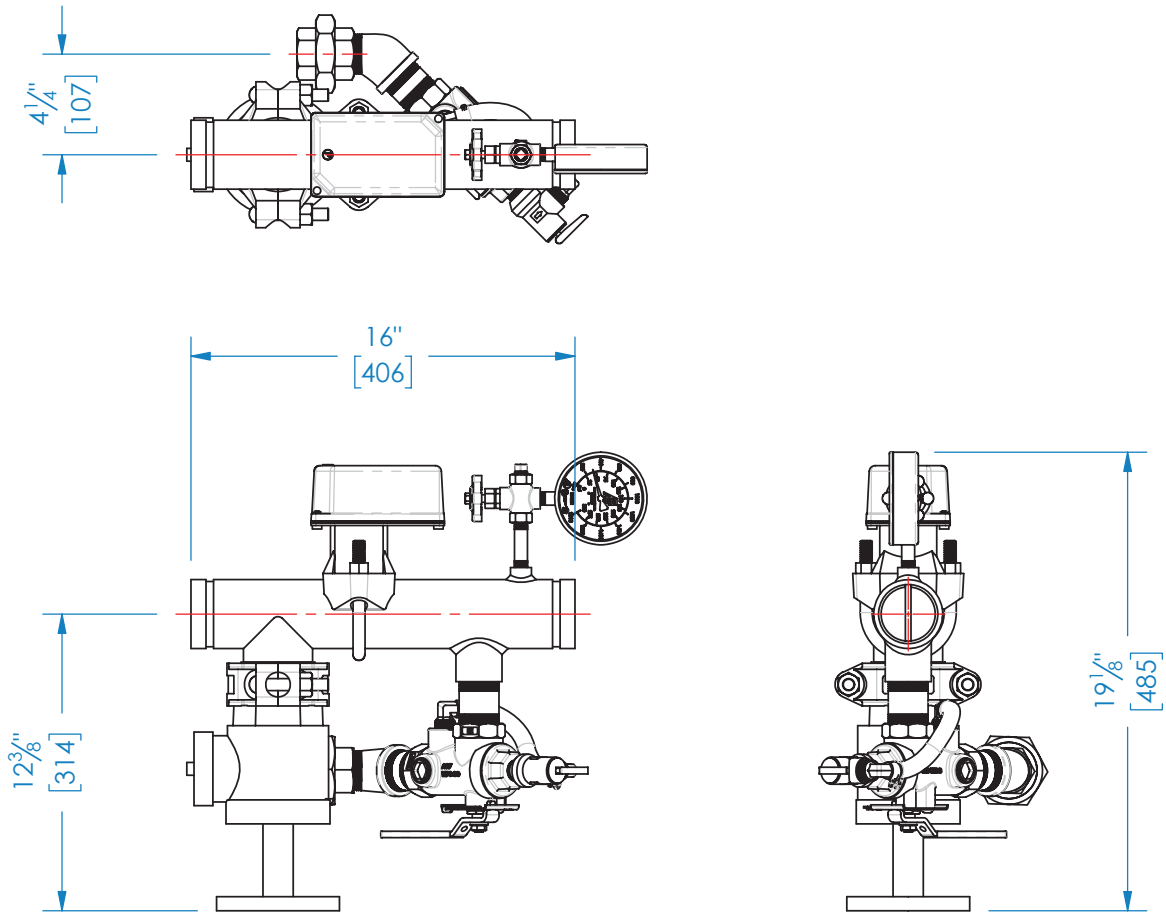
1. Sch 10 Steel Riser
2. Flow Switch
3. 3-Way Gauge Valve
4. Pressure Gauge
5. TESTanDRAIN M2511A
6. Hose Connection

**NOTE:** UL and FM standards for sprinkler system pressure relief valves require relief valves to operate within a range of their ratings. FM requires a relief valve to OPEN at a pressure no less than 85% of their rating and UL requires OPENING at a pressure no greater than 105% of their rating. Both standards require the relief valves to CLOSE within a percentage below OPEN. Choose the relief valve comparing static pressure to 90% of the relief valve's rating to determine the estimated minimum OPENING and 80% of the relief valve's rating for approximate maximum CLOSING. The relief valve should be installed where it is easily accessible for maintenance. Care should be taken that the relief valve CANNOT be isolated from the system when the system is operational. A relief valve should NEVER have a shutoff valve or a plug downstream of its outlet.



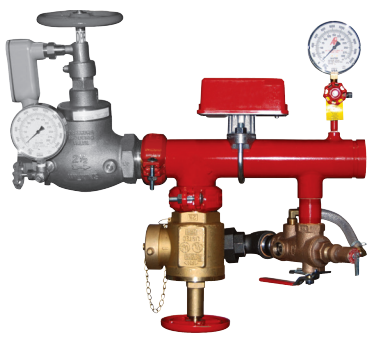
**Reliability, Versatility, Code Compatibility**

## Model 8511 Dimensions

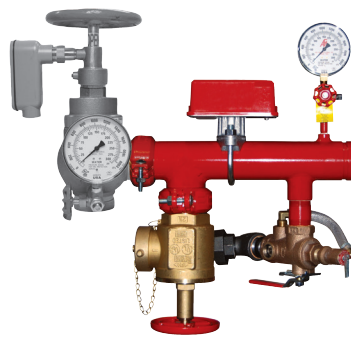


## Commercial RISERPACK with Pressure Reducing Valves

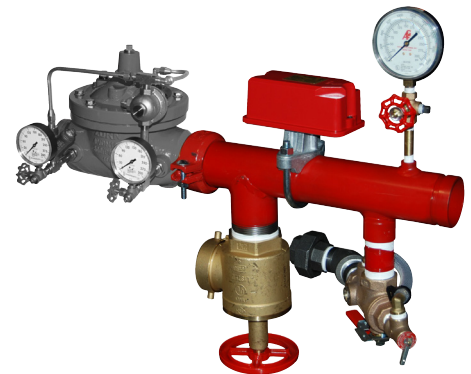
The RISERPACK Model 8511 are designed to be used in conjunction with a third party pressure reducing valve. *Pressure reducing valves are sold separately.*



Inline Pressure Reducing Valve  
(Sold Separately)



Angled Pressure Reducing Valve  
(Sold Separately)



Pilot Operated Pressure Reducing Valve  
(Sold Separately)

**Patent Pending**



**AGF Manufacturing**

100 Quaker Lane  
Malvern, PA 19355

Phone: 610-240-4900

[www.agfmfg.com](http://www.agfmfg.com)

Job Name: \_\_\_\_\_

Architect: \_\_\_\_\_

Engineer: \_\_\_\_\_

Contractor: \_\_\_\_\_