

RISERPACK®

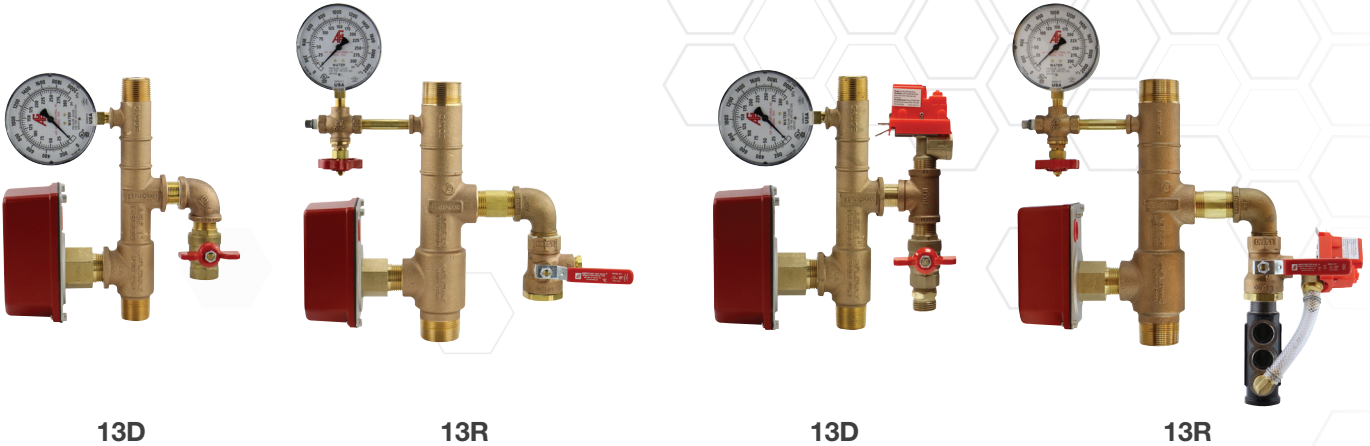
Residential Model 8000/8011

QUALITY COMPONENTS FOR FIRE SPRINKLER SYSTEMS

Model 8000

Model 8011

Includes Pressure Relief Valve and Drain Trim



Residential TEST_{AND}DRAIN Risers

AGF Residential RISERPACK Model 8000 and Model 8011 are 300 PSI rated, pre-assembled risers designed for NFPA 13D and 13R wet pipe fire sprinkler systems.

RISERPACK models come in 1", 1¼", 1½", and 2" sizes. Residential manifolds are cast bronze with THD x THD, THD x GRV, or GRV x GRV connections. All models include a standard water flow switch and pressure gauge. 1¼"-2" models feature an INSPECTORS TEST valve. Inspectors TEST valves allow system access for integrity testing, and offer a range of orifice sizes (K2.8-K5.6). 13R models include a 3-way universal gauge valve for pressure testing.

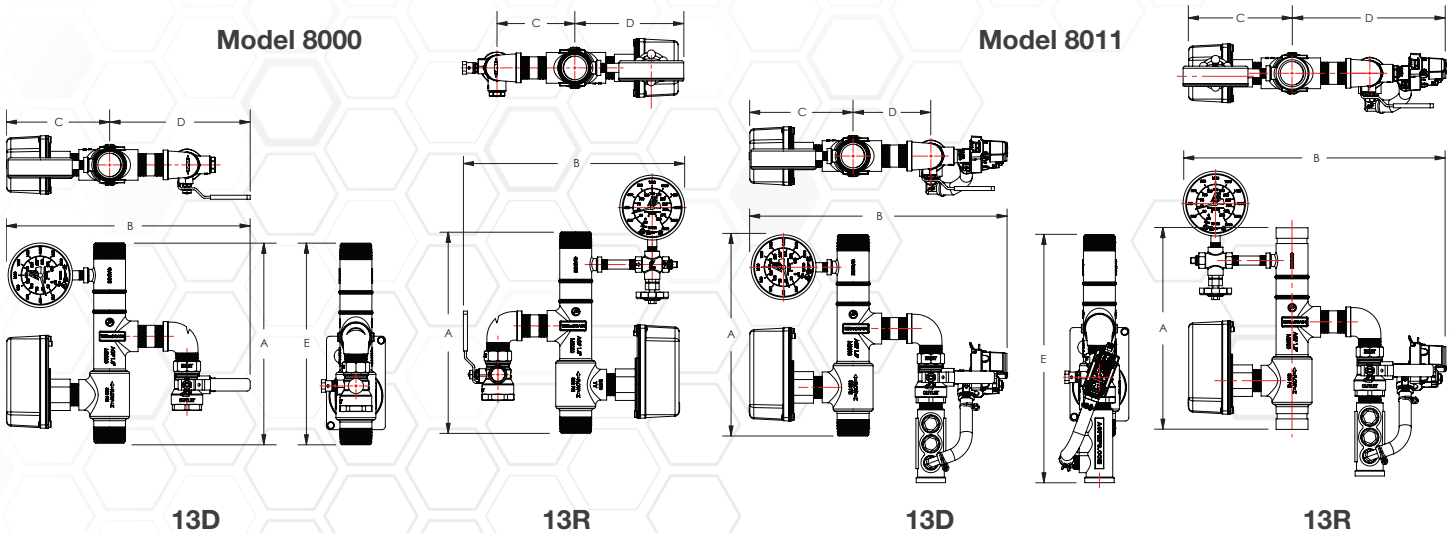
8011 models include a UL listed/FM approved, 175 PSI rated pressure relief valve with drain trim (200, 225, and 300 PSI ratings are also available).

Models

| Orifice Size | | 13D Part Numbers | | 13R Part Numbers | | | | | | | | | | | |
|--------------|------------|------------------|-------|------------------|-------|-------|-------|-------|-------|-------|-------|-----------|-------|-------|-------|
| | | 1" | | 1¼" | | 1½" | | | | 2" | | | | | |
| K-Factor | Fractional | Thd | | Thd | | Thd | | Grv | | Thd | | Thd x Grv | | Grv | |
| | | 8000 | 8011 | 8000 | 8011 | 8000 | 8011 | 8000 | 8011 | 8000 | 8011 | 8000 | 8011 | 8000 | 8011 |
| 2.8 | 3/8" | 8100D | 8200D | 8110R | 8210R | 8120R | 8220R | 8130R | 8230R | 8140R | 8240R | 8145R | 8245R | 8150R | 8250R |
| 4.2 | 7/16" | 8101D | 8201D | 8111R | 8211R | 8121R | 8221R | 8131R | 8231R | 8141R | 8241R | 8146R | 8246R | 8151R | 8251R |
| 5.6 | 1/2" | 8102D | 8202D | 8112R | 8212R | 8122R | 8222R | 8132R | 8232R | 8142R | 8242R | 8147R | 8247R | 8152R | 8252R |



Dimensions



| | Size | A | B | C | D | E | |
|------|------|------------------|------------------|-----------------|-----------------|------------------|------------------|
| | | | | | | 13D | 13R |
| 8000 | 1" | 10½" (267 mm) | 12¼" (311 mm) | 4¾" (121 mm) | 6¼" (159 mm) | 10¾" (273 mm) | - |
| | 1" | 10½" (267 mm) | 12¼" (311 mm) | 2⅞" (73 mm) | 6¼" (159 mm) | 10¾" (273 mm) | - |
| 8011 | 1¼" | 11" (279 mm) | 15" (381 mm) | 4" (102 mm) | 6½" (165 mm) | 14⅝" (371 mm) | 18" (458 mm) |
| | 1½" | 12" (305 mm) | 15¼" (387 mm) | 4⅛" (105 mm) | 6⅝" (168 mm) | 15" (382 mm) | 18⅜" (468 mm) |
| | 2" | 12" (305 mm) | 15¾" (399 mm) | 4⅞" (111 mm) | 6⅞" (174 mm) | 15" (382 mm) | 18⅜" (468 mm) |

Sizes have been rounded to the highest millimeter

- 1" RISERPACK Model 8000 features a ¾" ball valve with patented TESTANDRAIN orifice specific outlet designed to accept a garden hose or hard pipe drain line.
- 1¼", 1½", and 2" models feature an INSPECTORSTEST Model 3011BV with optional orifice size (K2.8-K5.6).

NOTE: UL and FM standards for sprinkler system pressure relief valves require relief valves to operate within a range of their ratings. FM requires a relief valve to OPEN at a pressure no less than 85% of their rating and UL requires OPENING at a pressure no greater than 105% of their rating. Both standards require the relief valves to CLOSE within a percentage below OPEN. Choose the relief valve comparing static pressure to 90% of the relief valve's rating to determine the estimated minimum OPENING and 80% of the relief valve's rating for approximate maximum CLOSING. The relief valve should be installed where it is easily accessible for maintenance. Care should be taken that the relief valve CANNOT be isolated from the system when the system is operational. A relief valve should NEVER have a shutoff valve or a plug downstream of its outlet.

USA Patent and Other Patents Pending

For use on wet fire sprinkler systems.

Manifold Sizes

1", 1¼", 1½", and 2"

Orifice Options

2.8K, 4.2K, and 5.6K

Connections

Inlet.....THD, GRV, or THD x GRV

Outlet.....THD, GRV, or THD x GRV

Installation Orientation

Horizontal

Vertical

Rating

300 PSI

Compliance

NFPA 13

NYC-BSA No. 720-87-SM

Approvals

UL/ULC (EX27218, EX4019,

EX4533 & EX6266)

FM



AGF Manufacturing Inc.
100 Quaker Lane, Malvern, PA 19355

Phone: 610-240-4900
techsupport@agfmfg.com

www.agfmfg.com

Job Name: _____

Architect: _____

Engineer: _____

Contractor: _____